



## ISHLT ANNUAL MEETING PAPERS

# Hospitalized patients with irreversible lung injury from COVID-19 have higher morbidity but similar 1-year survival after lung transplant compared to hospitalized patients transplanted for restrictive lung disease

Deepika Razia, MD,<sup>a</sup> Michael T. Olson, BS,<sup>b</sup> Katherine Grief, RN,<sup>a</sup>  
Rajat Walia, MD,<sup>a,c</sup> Ross M. Bremner, MD, PhD,<sup>a,c</sup> Michael A. Smith, MD,<sup>a,c</sup> and  
Sofya Tokman, MD<sup>a,c</sup>

From the <sup>a</sup>Norton Thoracic Institute, St. Joseph's Hospital and Medical Center, Phoenix, Arizona; <sup>b</sup>University of Arizona College of Medicine – Phoenix Campus, Phoenix, Arizona, USA; and the <sup>c</sup>Creighton University School of Medicine, Phoenix Regional Campus, Phoenix, Arizona.

**KEYWORDS:**

lung transplant;  
inpatient;  
COVID-19;  
SARS-CoV-2;  
UNOS group D,  
restrictive lung disease

**BACKGROUND:** Hospitalized lung transplant (LT) recipients (LTRs) have higher post-LT morbidity and mortality than those who are well enough to wait for transplant at home. Outcomes after LT for COVID-19-associated acute respiratory distress syndrome (CARDS) may be even worse; thus, we compared post-LT outcomes between hospitalized LTRs transplanted for CARDS and those transplanted for restrictive lung disease (RLD).

**METHODS:** Between 2014 and 2021, hospitalized LTRs  $\geq 18$  years old with CARDS or RLD were included. Primary and secondary outcomes were 1-year post-LT survival and postoperative morbidity. For each patient in the CARDS group, an analysis of 1-to-1 matched patients from the RLD group was performed using logistic regression modeling.

**RESULTS:** Of 764 LTRs, 163 (21.3%) were hospitalized at the time of LT; 132 met the inclusion criteria: 11 (8.3%) were transplanted for CARDS and 121 (91.7%) for RLD. LTRs with CARDS were younger with longer pre-LT hospitalization stays and higher rates of pretransplant mechanical ventilation, dialysis, and ECMO as a bridge to transplant. A propensity-matched analysis demonstrated comparable rates of intrathoracic adhesions, posttransplant duration of mechanical ventilation, PGD3 at 72 hours, and delayed chest closure. Compared to LTRs with RLD, those with CARDS had significantly longer posttransplant hospital stays and a higher prevalence of ACR  $\geq A2$  and DSA  $>2000$  MFI, but comparable 1-year survival rates.

**CONCLUSION:** Even with careful selection, LT for patients with CARDS was associated with significant morbidity; however, 1-year survival of recipients with CARDS was comparable to that of matched hospitalized recipients with RLD.

Presentation information: These data are accepted for mini-oral presentation at the annual meeting and scientific sessions of the International Society for Heart and Lung Transplantation, April 27-30, Boston, MA, USA.

IRB approval: PHXU-21-500-137-73-18 dated March 31, 2021, with annual renewal.

Reprint requests: Sofya Tokman, MD, Norton Thoracic Institute, St. Joseph's Hospital and Medical Center, 500 W Thomas Rd, Suite 500, Phoenix, Arizona 85013. Telephone: +1 602-406-4000. Fax: +1 602-406-6498.

E-mail address: [sofya.tokman@dignityhealth.org](mailto:sofya.tokman@dignityhealth.org)

Lung transplantation (LT) can be lifesaving for patients with end-stage lung diseases. Historically, LT was rarely considered for patients with acute respiratory distress syndrome (ARDS) in the absence of preexisting lung disease due to limitations in transplant evaluation, the presence of critical illness, and significant extrapulmonary complications.<sup>1</sup> The ongoing coronavirus disease 2019 (COVID-19) pandemic has led to nearly 6 million deaths worldwide, and the mortality from COVID-19 is driven by severe ARDS, which often requires treatment in an intensive care unit, mechanical ventilation, and, on occasion, extracorporeal membrane oxygenation (ECMO).<sup>2,3</sup> In addition to respiratory failure, patients with COVID-19–induced ARDS (CARDS) experience other intrathoracic complications such as pneumothorax with bronchopleural fistula, bacterial infections including empyema, pulmonary emboli, and hemothorax. Extrathoracic complications are also common and include delirium, bloodstream infections, renal failure requiring dialysis, malnutrition, secondary sclerosing cholangitis, and debilitating critical illness myopathy and neuropathy. Patients with irreversible lung injury due to COVID-19 depend on LT for survival; however, their LT candidacy is often challenged by critical illness, malnutrition, and extrathoracic complications.<sup>4–15</sup>

In the United States, the lung allocation score (LAS) reflects and prioritizes the urgency and severity of disease for organ allocation.<sup>16</sup> Although LT candidates with a high LAS have high healthcare utilization,<sup>17,18</sup> LT offers a net survival benefit,<sup>19,20</sup> and these patients are increasingly being accepted for LT.<sup>18</sup> Our group has previously demonstrated that candidates with rapid deterioration of preexisting lung disease resulting in acute respiratory failure who are hospitalized at the time of LT have higher post-LT morbidity, but comparable 1-year survival to those who are well enough to remain at home before LT.<sup>21</sup> In this study, we compared the clinical outcomes between lung transplant recipients (LTRs) transplanted for CARDS and those transplanted for restrictive lung disease (RLD) who were hospitalized at the time of LT.

## Methods

The institutional review board at Norton Thoracic Institute, St. Joseph's Hospital and Medical Center, Phoenix, Arizona approved this retrospective study with waiver of patient consent (PHXU-21-500-137-73-18 dated 3/31/2021), and all patient care was carried out under strict compliance with the International Society for Heart and Lung Transplantation ethics statement. Hospitalized LTRs between January 1, 2014, and August 31, 2021, were included and categorized by the indication for LT: CARDS or RLD. LTRs were excluded for age <18 years and a primary indication for LT other than United Network for Organ Sharing (UNOS) disease group D (restrictive diseases). UNOS group D was chosen due to the physiological similarity of underlying disease to that of CARDS. The primary outcome was 1-year posttransplant survival, and the secondary outcome was postoperative morbidity, including duration of posttransplant mechanical ventilation, primary graft dysfunction grade 3 (PGD3) at

72 hours posttransplant, duration of posttransplant hospital stay, allograft ischemia time, use of intraoperative cardiopulmonary bypass, intraoperative bleeding, ECMO rescue for severe PGD, reintubation before initial hospital discharge, total blood products transfused during the first 2 postoperative weeks, unplanned return to the operating room (OR), and follow-up outcomes including acute cellular rejection and development of *de novo* donor-specific antibodies (DSAs) with mean fluorescence intensity (MFI) >2000 within 1 year of LT. Unplanned thoracic interventions (decortication/pleurodesis, reexploration for hemothorax evacuation, and sternal hardware repair) and planned surgical interventions during the first posttransplant year were also reviewed in both groups. Due to the large number of subjects in the control group, a propensity-matched analysis was then performed.

All patients were hospitalized at the time of organ offer due to advanced hypoxemia. All LTRs transplanted for CARDS were hospitalized at the time of listing; however, some LTRs transplanted for RLD were listed while outpatient but were subsequently hospitalized before LT. Patients with CARDS were deemed appropriate for LT if they met the following criteria: (1) no evidence of pulmonary recovery despite SARS-CoV-2 clearance, (2) inability to wean from high-flow supplemental oxygen, mechanical ventilation, and/or ECMO for at least 2 months after the onset of ARDS, (3) absence of irreversible nonpulmonary organ dysfunction, and (4) adequate rehabilitation potential.<sup>22</sup> None of the patients with CARDS had known lung disease prior to developing COVID-19.

## Lung transplant evaluation

Selection of candidates for LT was conducted in compliance with the International Society for Heart and Lung Transplantation guidelines.<sup>1</sup> However, LT evaluation was occasionally limited for patients who could not undergo pulmonary function testing due to the presence of a tracheostomy or need for mechanical ventilation, or who were too ill for invasive testing such as endoscopy or colonoscopy.

## Statistical analysis

Data were expressed as count (percentage) or median (interquartile range). Nonparametric Kruskal-Wallis test was used to compare continuous variables and Fischer's exact test or chi-square analysis was used to compare categorical variables. Kaplan-Meier method was used to estimate survival and the log-rank test was used to compare survival between the study groups. Although several outcomes of clinical interest were evaluated, we tested each null hypothesis separately rather than using a multi-variate model; therefore, the observed *p*-value for each hypothesis was reported without adjustment and the prespecified significance level of  $\alpha$  was unchanged. All tests were 2-sided with a significance level of 0.05. Analyses were performed with Stata Statistical Software, Release 13 (Stata Corp College Station).

One-to-one (1:1) propensity score matching was performed using a logistic regression model with nearest-neighbor method without replacement. Selection of 1-to-1 matched control patients was processed through maximized execution performance without a caliper. For each hospitalized patient transplanted for CARDS, a matched patient from the control group of hospitalized patients transplanted for RLD was selected based on age, gender, ECMO as a bridge to transplant, and pretransplant hospital stay duration

**Table 1** Baseline and Preoperative Characteristics in the Study Groups

Variable	Hospitalized patients transplanted for CARDS N = 11	Hospitalized patients transplanted for RLD N = 121	p-value <sup>b</sup>
Age at transplant, years <sup>a</sup>	47 (42.5, 56.7)	62.4 (56.4, 68.3)	<b>0.001</b>
Sex, male	9 (81.8)	89 (73.6)	0.548
Body mass index at listing, kg/m <sup>a</sup>	28.9 (25.3, 30.2)	26.9 (23.6, 30.5)	0.764
Lung allocation score <sup>a</sup>	84.5 (46.5, 88.5)	81.3 (57.1, 87.3)	0.918
Underlying lung disease			
COVID-19 ARDS	11 (100)	0 (0)	
IPF	0 (0)	96 (79.3)	
Non-IPF RLD	0 (0)	25 (20.7)	
Calculated panel reactive antibodies, class I ( $\geq 1\%$ ), yes	6 (54.5)	32 (27.8)	0.065
Calculated panel reactive antibodies, class II ( $\geq 1\%$ ), yes	3 (33.3)	24 (22.4)	0.457
Calculated panel reactive antibodies, class I ( $\geq 50\%$ ), yes	2 (18.2)	5 (4.3)	0.056
Calculated panel reactive antibodies, class II ( $\geq 50\%$ ), yes	1 (11.1)	6 (5.6)	0.505
Interval between initial hospitalization and transplant, days <sup>a</sup>	100 (85, 121)	14 (9, 21)	<b>&lt;0.001</b>
Interval between listing and transplant, days <sup>a</sup>	5 (4, 11)	5 (3, 11)	0.482
Mean pulmonary artery pressure, mm Hg <sup>a</sup>	25.5 (22, 36.5)	25.0 (19, 34)	0.770
Pulmonary capillary wedge pressure, mm Hg <sup>a</sup>	11 (8, 16)	9 (5, 14)	0.221
Cardiac output, l/min <sup>a</sup>	7.35 (6.3, 8.7)	5.5 (4.8, 6.6)	<b>0.013</b>
Ventilator support just prior to transplant, yes	10 (90.9)	42 (34.7)	<b>&lt;0.001</b>
Vasopressor dependence immediately before transplant, yes	8 (72.7)	47 (38.8)	0.054
ECMO as bridge to transplant	8 (72.7)	34 (28.1)	<b>0.002</b>
Dialysis immediately before transplant, yes	1 (9.1)	1 (0.8)	<b>0.032</b>

Abbreviations: CARDS, COVID-19 associated acute respiratory distress syndrome; COVID-19, coronavirus disease 2019; ECMO, extracorporeal membrane oxygenation; IPF, idiopathic pulmonary fibrosis; LT, lung transplant; RLD, restrictive lung disease.

Bold font indicates statistical significance ( $p < 0.05$ ).

Data expressed as count (percentage) unless otherwise specified.

<sup>a</sup>data expressed as median (interquartile range);

<sup>b</sup>nonparametric Kruskal-Wallis test for equal medians for continuous variables. Fischer's exact test for equal proportions for binary variables. Wald test based on generalized estimating equations for categorical variables with more than 2 levels; the unknown category, if present, was excluded from the testing procedure.

with a match tolerance range of 0.002 to 0.4. Imbalances in matched variables were assessed with standardized mean difference, and a Cohen's  $d$  value of 0.2, 0.5, and 0.8 was set as measures of small, medium, and large effect sizes, respectively.<sup>23</sup> Propensity-matched analysis was performed using IBM SPSS Statistics for Windows, Version 23.0. Armonk, NY: IBM Corp. released 2015 and R package 3.1.0 with "psmatching3.03" extension bundle (R Foundation for Statistical Computing).

## Results

Of 764 LTs during the study period at our institution, 163 were hospitalized at the time of transplant (21.3%). Patients were excluded for age  $< 18$  years ( $n = 2$ ) and a primary indication for LT other than UNOS disease group D ( $n = 29$ : chronic obstructive pulmonary disease,  $n = 17$ ; cystic fibrosis,  $n = 8$  and pulmonary vascular disease,  $n = 4$ ). A total of 132 inpatient transplant recipients met the inclusion criteria and were divided into 2 groups: CARDS (8.3%,  $n = 11$ ) and RLD (91.7%,  $n = 121$ ).

### Baseline characteristics

LTRs transplanted for CARDS or RLD were comparable in terms of gender, body mass index at listing, LAS, pulmonary artery pressure, and pulmonary capillary wedge pressure (Table 1). The prevalence of candidates with calculated panel

reactive antibodies (cPRA) class I trended higher in the CARDS group than in the RLD group, but the difference was not statistically significant (cPRA class I  $> 1\%$ : 54.5% vs 27.8%,  $p = 0.065$ ; cPRA class I  $> 50\%$ : 18.2% vs 4.3%,  $p = 0.056$ ). The prevalence of candidates with cPRA class II was comparable between the CARDS and RLD groups (cPRA class II  $> 1\%$ : 33.3% vs 22.4%,  $p = 0.457$ ; cPRA class II  $> 50\%$ : 11.1% vs 5.6%,  $p = 0.505$ ). Of note, 4 LTRs in the RLD group had antibodies against human leucocyte antigens class-II, but cPRA could not be calculated; these 4 patients were excluded from the analysis.

Compared to LTRs with RLD, those with CARDS were significantly younger (47 years vs 62.4 years,  $p = 0.001$ ), were hospitalized for a longer duration before transplant (100 days vs 14 days,  $p < 0.001$ ), had a higher cardiac output (7.35 L vs 5.5 L,  $p = 0.013$ ), and were more likely to require pretransplant mechanical ventilation (90.9% vs 34.7%,  $p < 0.001$ ), dialysis (9.1% vs 0.8%,  $p = 0.032$ ), and ECMO as a bridge to transplant (72.7% vs 28.1%,  $p = 0.002$ ). The time on the waitlist and vasopressor dependence before transplant were comparable in the 2 groups.

### Perioperative outcomes

Compared to LTRs transplanted for RLD, those transplanted for CARDS were more likely to have severe

**Table 2** Perioperative Outcomes in the Study Groups

Variable	Hospitalized patients transplanted for CARDS N = 11	Hospitalized patients transplanted for RLD N = 121	p-value <sup>b</sup>
Right lung ischemia time, minutes <sup>a</sup>	250.5 (214, 368)	286 (214.5, 321.5)	0.965
Left lung ischemia time, minutes <sup>a</sup>	221.5 (170, 297)	240 (204, 295)	0.795
Intraoperative cardiopulmonary bypass use	1 (9.1)	35 (29.9)	0.142
Severe intrathoracic adhesions, yes	8 (72.7)	31 (28.4)	<b>0.003</b>
Posttransplant duration of mechanical ventilation			<b>0.045</b>
≤5 days	3 (27.3)	71 (58.7)	
>5 days	8 (72.7)	50 (41.3)	
Posttransplant ECMO rescue, yes	0 (0)	4 (3.3)	0.540
Primary graft dysfunction grade 3, 72 hours	4 (36.4)	12 (9.9)	<b>0.017</b>
Intubated at 72 hours, yes	9 (81.8)	56 (46.3)	<b>0.037</b>
Total blood products transfused during first 2 weeks posttransplant <sup>a</sup>	11 (8, 17)	8 (2, 25)	0.607
Dialysis between transplant and discharge, yes	2 (18.2)	11 (9.1)	0.333
Stroke between transplant and discharge, yes	0 (0)	9 (7.4)	0.349
Chest left open after LT	10 (90.9)	39 (35.8)	<b>&lt;0.001</b>
Unplanned return to OR	2 (18.2)	16 (13.2)	0.646
Interval between transplant and unplanned return to OR, days <sup>a</sup>	2 (1, 2)	3.5 (2, 10)	0.101
Airway dehiscence	0 (0)	1 (0.8)	0.762
Sternal dehiscence/osteomyelitis	0 (0)	11 (10.1)	0.269
Chest wall complications	0 (0)	3 (2.8)	0.577
Disposition at discharge			0.093
Home	0 (0)	41 (33.9)	
Skilled nursing facility	0 (0)	2 (1.7)	
Inpatient rehabilitation	11 (100)	75 (62)	
In-hospital mortality	0 (0)	3 (2.5)	
Length of inpatient hospital stay after transplant, days	47 (26, 61)	23 (14, 38.5)	<b>0.003</b>

Abbreviations: CARDS, COVID-19 associated acute respiratory distress syndrome, COVID-19, coronavirus disease 2019; ECMO, extracorporeal membrane oxygenation; LT, lung transplant; OR, operating room; RLD, restrictive lung disease.

Data expressed as count (percentage) unless otherwise specified.

Bold font indicates statistical significance ( $p < 0.05$ ).

<sup>a</sup>data expressed as median (interquartile range);

<sup>b</sup>nonparametric Kruskal-Wallis test for equal medians for continuous variables. Fischer's exact test for equal proportions for binary variables. Wald test based on generalized estimating equations for categorical variables with more than 2 levels; the unknown category, if present, was excluded from the testing procedure.

adhesions intraoperatively (72.7% vs 28.4%,  $p = 0.003$ ), to have their chest left open postoperatively (90.9% vs 35.8%,  $p < 0.001$ ), to require mechanical ventilation >5 days (72.7% vs 41.3%,  $p = 0.045$ ), to have PGD3 at 72 hours (36.4% vs 9.9%,  $p = 0.017$ ), and to have a longer post-LT hospital stay (47 days vs 23 days,  $p = 0.003$ ). However, both groups were comparable in terms of allograft ischemic time, use of intraoperative cardiopulmonary bypass, intraoperative bleeding, ECMO rescue for severe PGD, total blood products transfused during first 2 postoperative weeks, unplanned return to the OR, and prevalence of early complications such as airway dehiscence, sternal dehiscence or osteomyelitis, chest wall complications, stroke, and need for dialysis (Table 2). Disposition at discharge was also comparable between the 2 groups; all LTRs with CARDS and 62% with RLD required inpatient rehabilitation ( $p = 0.093$ ).

## Follow-up outcomes and survival

The FEV<sub>1</sub> and FVC on the first post-LT pulmonary function test, the FEV<sub>1</sub> and FVC at 1-year, and the 30-day readmission rate were comparable between the 2 groups (Table 3). Importantly, the number of acute cellular rejection events ( $\geq$ grade A2) and the prevalence of *de novo* DSAs (MFI >2000) in the first post-LT year were significantly higher in the CARDS group than in the RLD group (36.4% vs 9.9%,  $p = 0.015$  and 63% vs 23%, 0.017, respectively). However, 30-day mortality, as well as 1-year mortality, was comparable. The probability of survival at 1-year in the CARDS and RLD groups was 90.9% and 85.1%, respectively ( $p = 0.576$ ; Figure 1). Unplanned thoracic interventions after transplant occurred in both groups and included decortication/pleurodesis, operative hemothorax evacuation, sternal hardware repair, thoracic duct ligation, and lobectomy (Table 4); chest reexploration for hemothorax was the most common intervention.

**Table 3** Postoperative and 1-year Follow-up Outcomes in the Study Groups

Variable	Hospitalized patients transplanted for CARDSN = 11	Hospitalized patients transplanted for RLDN = 121	p-value <sup>b</sup>
% predicted FEV <sub>1</sub> , first posttransplant PFT <sup>a</sup>	53 (40, 60)	58 (42, 77)	0.220
% predicted FVC, first posttransplant PFT <sup>a</sup>	46 (39, 59)	53.5 (40, 73)	0.263
% predicted FEV <sub>1</sub> , 1-year posttransplant <sup>a</sup>	64.5 (55, 78)	72 (59, 87)	0.269
% predicted FVC, 1-year posttransplant <sup>a</sup>	67.5 (52, 77.5)	69 (58, 85)	0.573
ACR within First year posttransplant, yes	6 (54.5)	46 (40)	0.349
ACR events in 1 year, grade A1, yes	2 (18.2)	37 (30.6)	0.312
ACR events in 1 year, ≥ grade A2, yes	4 (36.4)	12 (9.9)	<b>0.015</b>
Number of ACR events in 1 year, total <sup>a</sup>	1 (0, 1)	0 (0, 1)	0.386
<i>De novo</i> DSA >2000 MFI within 1 year, yes	5 (62.5)	16 (22.9)	<b>0.017</b>
30-day readmission, yes	2 (18.2)	26 (31.3)	0.461
30-day mortality, yes	0 (0)	1 (0.8)	0.762
1-year mortality, yes	1 (9.1)	18 (14.9)	0.601
Survival from transplant with available follow-up, months <sup>a</sup>	9.3 (7.9, 11.5)	33.4 (14.5, 60.3)	<b>&lt;0.001</b>

Abbreviations: CARDS, COVID-19 associated acute respiratory distress syndrome, ACR, acute cellular rejection; COVID-19, coronavirus disease 2019; DSA, donor-specific antibody; FEV<sub>1</sub>, forced expiratory volume in 1 second; FVC, forced vital capacity; LT, lung transplant; MFI, mean fluorescence intensity; PFT, pulmonary function test; RLD, restrictive lung disease.

Data expressed as count (percentage) unless otherwise specified.

Bold font indicates statistical significance ( $p < 0.05$ ).

<sup>a</sup>data expressed as median (interquartile range);

<sup>b</sup>nonparametric Kruskal-Wallis test for equal medians for continuous variables. Fischer's exact test for equal proportions for binary variables.

## Propensity-matched analysis

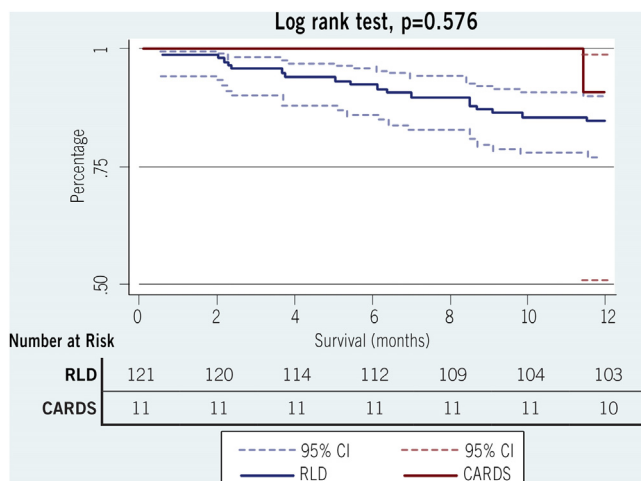
A propensity-matched cohort was obtained for 10 of 11 LTRs transplanted for CARDS, which was balanced with those transplanted for RLD. The matched patients in the case and control groups were balanced on age and gender as well as pretransplant hospital stay duration with a small effect size and ECMO as bridge to transplant with a medium effect size (Table 5). One patient with CARDS, for whom a match could not be obtained from the control group, was excluded from this analysis.

Ten hospitalized LTRs transplanted for CARDS and 10-matched hospitalized LTRs transplanted for RLD had

comparable posttransplant outcomes, including prevalence of intrathoracic adhesions, posttransplant duration of mechanical ventilation, primary graft dysfunction at 72 hours, and posttransplant open chest management. The probability of survival at 1-year in the CARDS and RLD groups was also comparable (90% vs 100% respectively,  $p = 0.317$ ). The propensity-matched analysis confirmed the significantly longer inpatient hospital stay after transplant, higher prevalence of ACR ≥ grade A2, and higher prevalence of *de novo* DSA >2000 MFI in the CARDS group compared to the matched RLD group (Table 6).

## Discussion

Appropriate LT candidate selection is paramount to good organ stewardship and recipient survival. Over time, experienced transplant centers have expanded their candidate selection criteria to include hospitalized and even critically ill patients as short- and long-term posttransplant outcomes for these patients have improved.<sup>18-20</sup> Patients with RLD, most commonly idiopathic pulmonary fibrosis, can experience acute exacerbations characterized by worsening dyspnea, hypoxemia, and radiographic progression of disease with ground-glass opacities overlying areas of fibrosis. These patients are typically afflicted with single organ failure, the lungs, but can require extensive support including mechanical ventilation and ECMO, which are associated with development of additional comorbidities such as critical illness myopathy, infection, and bleeding. Historically, patients with ARDS have been excluded from LT, but the COVID-19 pandemic has changed the face of solid organ transplantation, and patients with CARDS who do not recover from lung injury depend on LT for survival. However, these patients are often more severely ill than even the typical hospitalized LT candidate due to prolonged illness,



**Figure 1** Kaplan-Meier 1-year survival estimates after inpatient transplant for COVID-19 versus inpatient transplant for restrictive lung disease. Abbreviations: CARDS, COVID-19-associated acute respiratory distress syndrome; RLD, restrictive lung disease; CI, confidence interval.

**Table 4** Thoracic Surgical Interventions in the Study Groups in the First Year After Lung Transplant

Procedure	Hospitalized patients transplanted for CARDS N = 11	Hospitalized patients transplanted for RLD N = 121	p-value
Surgical hemothorax evacuation	2 (18.2)	5 (4.1)	0.046
Decortication and/or pleurodesis	1 (9.1)	4 (3.3)	0.336
Thoracic duct ligation	0 (0)	2 (1.6)	0.667
Anastomotic dehiscence	0 (0)	0 (0)	N/A
Sternal hardware repair	0 (0)	11 (9.1)	0.296
Lobectomy	0 (0)	1 (0.8)	0.762

Abbreviations: CARDS, COVID-19 associated acute respiratory distress syndrome, COVID-19, coronavirus disease 2019; N/A, not applicable; RLD, restrictive lung disease.

Data expressed as count (percentage).

**Table 5** Variables in the Propensity-Matched Groups

Variable	Hospitalized LTRs transplanted for CARDS N = 10	Hospitalized LTRs transplanted for RLD N = 10	Standardized mean difference (Cohen's d)	p-value
Age, years	49.6 (11.8)	50.1 (10.8)	0.04	0.992
Gender, male	8 (80)	8 (80)	0.00	1.000
ECMO as bridge to transplant, yes	8 (80)	6 (60)	0.44	0.329
Pretransplant hospital stay duration, days	104 (23)	86.2 (229.9)	0.11	0.811

Abbreviations: CARDS, COVID-19 associated acute respiratory distress syndrome, COVID-19, coronavirus disease 2019; ECMO, extracorporeal membrane oxygenation; LTR, lung transplant recipient; RLD, restrictive lung disease.

Data expressed as mean (standard deviation) for continuous variables or frequency (proportion) for categorical variables. Effect size measures as small (Cohen's d=0.2), medium (Cohen's d=0.5) and large (Cohen's d=0.8).<sup>23</sup>

prolonged hospitalization, multi-organ system dysfunction, and iatrogenic complications.

In this comparison of LTRs with comparable LAS scores (median LAS in CARDS and RLD groups: 84.5 vs 81.3,  $p=0.918$ ), we have shown that patients transplanted for CARDS have acceptable 1-year survival that is comparable to that of patients transplanted for RLD. Similarly high survival rates have also been reported by other groups. In a retrospective case series from Northwestern University, Kurihara et al<sup>10</sup> reviewed the clinical outcomes of 102 consecutive patients transplanted between January 21, 2020, and September 30, 2021, including 30 patients with CARDS. At follow-up, all 30 LTRs with CARDS were alive (median follow-up, 351 days [IQR, 176-555] after transplant) vs 60 non-CARDS patients (83%) (median follow-up, 488 days [IQR, 368-570] after transplant). In another analysis using the UNOS registry, Roach et al<sup>13</sup> included 214 patients transplanted for COVID-19-related respiratory failure (ARDS,  $n=140$ ; pulmonary fibrosis,  $n=74$ ) between August 1, 2020, and September 30, 2021, in the United States. They reported a 30-day mortality of 2.2% (4 deaths) and 3-month survival of 95.6% (95% CI, 90.1 to 98.1), with a median follow-up of 1.9 months (IQR 1.1-5.8).<sup>13</sup> Lastly, our group previously reported comparable posttransplant survival between hospitalized LT candidates and those that were waiting for a transplant at home (hazard ratio of death [95% CI]=0.32 [0.09, 1.02],  $p=0.056$ ).<sup>21</sup> Although longer follow-up time is needed,

these results are encouraging and suggest that LT offers acceptable short-term and 1-year survival for carefully selected patients with irreversible respiratory failure from COVID-19, and their survival mirrors that of LTRs with RLD hospitalized at the time of transplant.

Despite acceptable 1-year survival, LT candidates with CARDS face a challenging intraoperative course as well as a long and difficult posttransplant recovery. Prior to the pandemic, our group reported that LTRs hospitalized at the time of transplant had higher intraoperative transfusion requirements, a higher incidence of chest reexploration for bleeding, longer posttransplant hospital stays, and higher total, variable, and fixed costs of posttransplant care than LTRs who waited for transplant at home.<sup>21</sup> Data from the current study suggest that intraoperative and postoperative care may be even more challenging among hospitalized patients transplanted for CARDS than among those transplanted for RLD in part due to more severe intraoperative adhesions, higher rates of open chest management due to intraoperative hemorrhage, a higher incidence of PGD3 at 72 hours posttransplant, longer durations of mechanical ventilation, and longer posttransplant hospital stays. Similar to our findings, Kurihara et al<sup>10</sup> reported that compared to the control group, LTRs with CARDS had a higher prevalence of PGD at 72 hours posttransplant (70% vs 20.8%), longer duration of posttransplant mechanical ventilation (6.5 vs 2 days), longer ICU stay (18 vs 9 days), longer hospital stay (28.5 vs 16 days), and a higher prevalence of

**Table 6** Posttransplant Outcomes in Propensity-Matched Groups

Variable	Hospitalized LTRs transplanted for CARDS N = 10	Hospitalized LTRs transplanted for RLD N = 10	p-value <sup>b</sup>
Right lung ischemia time, minutes <sup>a</sup>	250.5 (214, 368)	276.5 (241, 322)	0.910
Left lung ischemia time, minutes <sup>a</sup>	221.5 (170, 297)	248 (234, 301)	0.597
Intraoperative cardiopulmonary bypass use	0 (0)	2 (20)	0.136
Severe intrathoracic adhesions, yes	7 (70)	4 (44.4)	0.260
Posttransplant duration of mechanical ventilation			0.639
≤5 days	3 (30)	4 (40)	
>5 days	7 (70)	6 (60)	
Posttransplant ECMO rescue, yes	0 (0)	0 (0)	N/A
Primary graft dysfunction grade 3, 72 hours	4 (40)	1 (20)	0.439
Intubated at 72 hours, yes	9 (90)	4 (80)	0.591
Total blood products transfused during first 2 weeks posttransplant <sup>a</sup>	11 (8, 17)	29 (3, 42)	0.252
Dialysis between transplant and discharge, yes	2 (20)	1 (10)	0.531
Stroke between transplant and discharge, yes	0 (0)	0 (0)	N/A
Chest left open after LT	7 (70)	1 (100)	0.521
Unplanned return to the OR	2 (20)	0 (0)	0.136
Airway dehiscence	0 (0)	0 (0)	N/A
Disposition at discharge			0.171
Home	0 (0)	2 (20)	
Skilled nursing facility	0 (0)	1 (10)	
Inpatient rehabilitation	10 (100)	7 (70)	
In-hospital mortality	0 (0)	0 (0)	
Length of inpatient hospital stay after transplant, days <sup>a</sup>	48 (26, 61)	23.5 (12, 34)	<b>0.037</b>
% predicted FEV <sub>1</sub> , first posttransplant PFT <sup>a</sup>	51.5 (40, 60)	49 (36.5, 72)	0.870
% predicted FVC, first posttransplant PFT <sup>a</sup>	45.5 (39, 59)	49 (33.5, 72.5)	0.595
% predicted FEV <sub>1</sub> , 1-year posttransplant <sup>a</sup>	64.5 (55, 78)	71 (64, 81)	0.413
% predicted FVC, 1-year posttransplant <sup>a</sup>	67.5 (52, 77.5)	73 (68.5, 86)	0.162
ACR within first year posttransplant, yes	6 (60)	4 (40)	0.371
ACR events in 1 year, grade A1, yes	2 (20)	4 (40)	0.329
ACR events in 1 year, ≥ grade A2, yes	4 (40)	0 (0)	<b>0.025</b>
<i>De novo</i> DSA >2000 MFI within 1 year, yes	7 (70)	0 (0)	<b>0.018</b>
30-day readmission, yes	2 (22.2)	3 (30)	0.518
30-day mortality, yes	0 (0)	0 (0)	N/A
1-year mortality, yes	1 (10)	0 (0)	0.305

Abbreviations: ACR, acute cellular rejection; CARDS, COVID-19 associated acute respiratory distress syndrome, COVID-19, coronavirus disease 2019; DSA, donor-specific antibodies; ECMO, extracorporeal membrane oxygenation; FEV<sub>1</sub>, forced expiratory volume in 1 second; FVC, forced vital capacity; LT, lung transplant; MFI, mean fluorescence intensity; N/A, not applicable; OR, operating room; PFT, pulmonary function test; RLD, restrictive lung disease.

Data expressed as count (percentage) unless otherwise specified.

Bold font indicates statistical significance ( $p < 0.05$ ).

<sup>a</sup>data expressed as median (interquartile range);

<sup>b</sup>nonparametric Kruskal-Wallis test for equal medians for continuous variables. Fischer's exact test for equal proportions for binary variables. Wald test based on generalized estimating equations for categorical variables with more than 2 levels; the unknown category, if present, was excluded from the testing procedure.

extrapulmonary end-organ dysfunction (e.g., permanent hemodialysis [13.3% vs 5.5%]). However, their control group included both LTRs hospitalized at the time of transplant and those that were brought in from home (median LAS: 46.7 [38.9-54.3]; 51.4% had underlying obstructive disease; and very few [ $<3\%$ ] required invasive mechanical ventilation before transplant). Therefore, the higher rates of posttransplant morbidity in the CARDS patients are not surprising given the difference in pretransplant severity of illness. Lastly, in the study by Kurihara et al,<sup>10</sup> the development of DSAs and ACR was less common in patients transplanted for CARDS than among those in the

control group. This finding was explained by invoking the 'immune accommodation' hypothesis, which suggests that lack of DSA development and ACR results from the dilution of antibody titers due to high intraoperative blood loss and increased blood transfusion. In contrast, with 1-year follow-up of the entire cohort as well as that of a propensity-matched cohort, we found a higher incidence of *de novo* DSA development and ACR ( $\geq$  grade A2) in patients transplanted for CARDS, which speaks to the need for larger studies, a detailed analysis of posttransplant immunosuppression, and longer posttransplant follow-up.

Although uncommon prior to the COVID-19 pandemic, LT for postviral severe ARDS has also been previously described.<sup>24,25</sup> Frick et al<sup>25</sup> reported outcomes of 13 LTRs from 3 high-volume centers in the Eurotransplant region over a period of 22 years. The majority had postinfluenza ARDS, 11 of 13 (84.6%) were bridged to transplant with ECMO, 3 of 13 (23.1%) had PGD3 at 72 hours posttransplant, and 9 of 13 (69.2%) had perioperative complications including hemorrhage, thrombosis, and sternal dehiscence; the series also reported prolonged posttransplant mechanical ventilation (median 33 days), prolonged posttransplant hospital stay (median 54 days), and reduced 1-year survival (71.6%). These findings suggest that perioperative and postoperative challenges of postviral ARDS are similar irrespective of the underlying viral etiology; however, the posttransplant 1-year survival for CARDS may be higher than that for other viral insults. This difference in survival is unlikely to be related to the underlying viral infection, as the acute infection had resolved at the time of transplant, but much more to do with candidate selection and perioperative and postoperative complications. Furthermore, we found that the technical complexity of the operation may in fact be similar in hospitalized LTRs with CARDS and those with RLD, as evidenced by comparable ischemia times and similar rates of ECMO rescue, blood transfusions, unplanned returns to the OR, and airway and chest wall complications between the 2 groups. Lastly, thoracic surgeons should anticipate a significant pleural adhesive burden in LTRs with CARDS.

Although LT for CARDS can be lifesaving for patients with irreversible lung injury, the operation is challenging, the recovery is arduous, and hospital resource utilization is high. These factors speak to the need for meticulous candidate selection with prioritization of patients without irreversible extrapulmonary organ dysfunction but with good rehabilitation potential, devoted caregiver support, and a steadfast commitment to recovery and long-term medical adherence. In light of the psychiatric and musculoskeletal complications endured by patients with CARDS, our center incorporates a detailed psychosocial assessment into our pretransplant evaluation. This assessment focuses on the patients' motivation and drive, as well as treatment of an underlying or newly developed psychiatric disorder that may be interfering with his/her ability to participate in rehabilitation. We also, on occasion, attempt to differentiate between critical illness myopathy and neuropathy in the weakest patients via electromyography as the latter tends to have a worse prognosis and confer a more prolonged/incomplete recovery.<sup>26</sup> With few exceptions, we now require that eligible transplant candidates with CARDS are able to stand and attempt to march in place prior to transplantation as a marker of musculoskeletal reserve and rehabilitation potential. Lastly, in the current COVID-19 era, CARDS is largely preventable through vaccination; at this time, it is not known whether vaccine hesitancy pretransplant is associated with medication nonadherence posttransplant.

In summary, compared to LTRs with RLD hospitalized at the time of transplant, patients transplanted for CARDS

were significantly younger, had longer hospital stays before and after LT, and were more likely to require mechanical ventilation, ECMO support, and hemodialysis before LT. They also had more challenging operations with extensive intrathoracic adhesions, a greater need for open-chest management postoperatively due to a high risk of ongoing bleeding, and higher rates of PGD3 at 72 hours posttransplant. In addition, ACR  $\geq$  grade A2 and *de novo* DSAs in the first year after transplant were also more common among patients transplanted for CARDS. However, the 2 groups had comparable allograft ischemia times, perioperative blood transfusions, rates of unplanned return to the OR, ECMO rescue rates, reintubation rates, postoperative complications, 30-day readmissions, and 1-year survival. Although this study is limited by its small sample size and retrospective approach, it confirms the experience from another large transplant center that LT is a feasible and life-saving option for select patients with irreversible respiratory failure due to CARDS. Notably, the challenges in the posttransplant care of these patients highlight the need for an aggressive and focused approach toward musculoskeletal recovery with a close partnership with inpatient physical, occupational, and speech therapy and access to an experienced rehabilitation center.

In conclusion, even among carefully selected patients with CARDS, LT was associated with significant preoperative, intraoperative, and postoperative morbidity. Despite these challenges, LT conferred a good 1-year survival that was comparable to that of LTRs with RLD hospitalized at the time of transplant. Longer follow-up is needed to further understand the long-term prognosis of this novel patient population.

### Author contributions

ST, MS, DR, RB and RW made substantial contributions to the conception or design of the work, drafting the work or revising it critically for important intellectual content, and final approval of the version to be published in accordance with ICMJE guidelines. MO, KG, DR and ST worked on the acquisition of the data, DR contributed to analysis, and ST, DR, MO, and MS to the interpretation of data for the work. All authors agree to be accountable for all aspects of the work in ensuring that questions related to the accuracy or integrity of any part of the work are appropriately investigated and resolved.

### Acknowledgments

The authors thank Kristine Nally for editorial assistance and Marco Marchionni for graphic design.

### Disclosure statement

No outside funding was obtained for this study. None of the authors have conflicts of interest to declare.



## References

1. Leard LE, Holm AM, Valapour M, et al. Consensus document for the selection of lung transplant candidates: an update from the International Society for Heart and Lung Transplantation. *J Heart Lung Transplant* 2021;40:1349-79.
2. Grasselli G, Tonetti T, Protti A, et al. Pathophysiology of COVID-19-associated acute respiratory distress syndrome: a multicentre prospective observational study. *Lancet Respir Med* 2020;8:1201-8.
3. Hendrickson KW, Peltan ID, Brown SM. The epidemiology of acute respiratory distress syndrome before and after coronavirus disease 2019. *Crit Care Clin* 2021;37:703-16.
4. Bharat A, Machuca TN, Querrey M, et al. Early outcomes after lung transplantation for severe COVID-19: a series of the first consecutive cases from four countries. *Lancet Respir Med* 2021;9:487-97.
5. Bharat A, Querrey M, Markov NS, et al. Lung transplantation for patients with severe COVID-19. *Sci Transl Med* 2020;12.
6. Chen JY, Qiao K, Liu F, et al. Lung transplantation as therapeutic option in acute respiratory distress syndrome for coronavirus disease 2019-related pulmonary fibrosis. *Chin Med J (Engl)* 2020;133:1390-6.
7. Fernandes LM, Pêgo-Fernandes PM. New challenges for lung transplantation in the era of COVID-19. *Sao Paulo Med J* 2022;140:1-4.
8. Glorion M, De Wolf J, Zuber B, et al. Lung transplantation for COVID-19-associated acute respiratory distress syndrome: the first French patient. *Respir Med Res* 2021;80:100851.
9. Han W, Zhu M, Chen J, et al. Lung transplantation for elderly patients with end-stage COVID-19 pneumonia. *Ann Surg* 2020;272:e33-4.
10. Kurihara C, Manerikar A, Querrey M, et al. Clinical characteristics and outcomes of patients with COVID-19-associated acute respiratory distress syndrome who underwent lung transplant. *JAMA* 2022;327:652-61.
11. Lang C, Jaksch P, Hoda MA, et al. Lung transplantation for COVID-19-associated acute respiratory distress syndrome in a PCR-positive patient. *Lancet Respir Med* 2020;8:1057-60.
12. Oh DK, Hong SB, Kim HC, et al. Experience of international air transportation and subsequent lung transplant in a patient with COVID-19-associated acute respiratory distress syndrome: a case report. *J Korean Med Sci* 2021;36:e123.
13. Roach A, Chikwe J, Catarino P, et al. Lung transplantation for Covid-19-related respiratory failure in the United States. *N Engl J Med* 2022;386:1187-8.
14. Stanford Medicine News Center Double transplant at Stanford saves life of critically ill COVID-19 patient. *Standard Medicine News Center*. 2021.
15. Vanderbilt University Medical Center COVID patient's heart-lung transplant is world's first. *VUMC Reporter*. 2020.
16. Egan TM, Murray S, Bustami RT, et al. Development of the new lung allocation system in the United States. *Am J Transplant* 2006;6(5 Pt 2):1212-27.
17. Arnaoutakis GJ, Allen JG, Merlo CA, et al. Impact of the lung allocation score on resource utilization after lung transplantation in the United States. *J Heart Lung Transplant* 2011;30:14-21.
18. Keller CA, Gonwa TA, White LJ, et al. Utilization and cost analysis of lung transplantation and survival after 10 years of adapting the lung allocation score. *Transplantation* 2019;103:638-46.
19. Russo MJ, Worku B, Iribarne A, et al. Does lung allocation score maximize survival benefit from lung transplantation? *J Thorac Cardiovasc Surg* 2011;141:1270-7.
20. Valapour M, Lehr CJ, Skeans MA, et al. OPTN/SRTR 2019 annual data report: lung. *Am J Transplant* 2021;21(2):441-520. Suppl.
21. Olson MT, Elnahas S, Roy SB, et al. Inpatient lung transplant evaluation is associated with increased risk of morbidity, mortality, and cost of care after transplant. *Prog Transplant* 2021;31:219-27.
22. Schaheen L, Bremner RM, Walia R, Smith MA. Lung transplantation for coronavirus disease 2019 (COVID-19): the who, what, where, when, and why. *J Thorac Cardiovasc Surg* 2022;163:865-8.
23. Lakens D. Calculating and reporting effect sizes to facilitate cumulative science: a practical primer for t-tests and ANOVAs. *Front Psychol* 2013;4:863.
24. Chang Y, Lee SO, Shim TS, et al. Lung transplantation as a therapeutic option in acute respiratory distress syndrome. *Transplantation* 2018;102:829-37.
25. Frick AE, Gan CT, Vos R, et al. Lung transplantation for acute respiratory distress syndrome: a multicenter experience. *Am J Transplant* 2022;22:144-53.
26. Guarneri B, Bertolini G, Latronico N. Long-term outcome in patients with critical illness myopathy or neuropathy: the Italian multicentre CRIMYNE study. *J Neurol Neurosurg Psychiatry* 2008;79:838-41.